

89MD Pictures



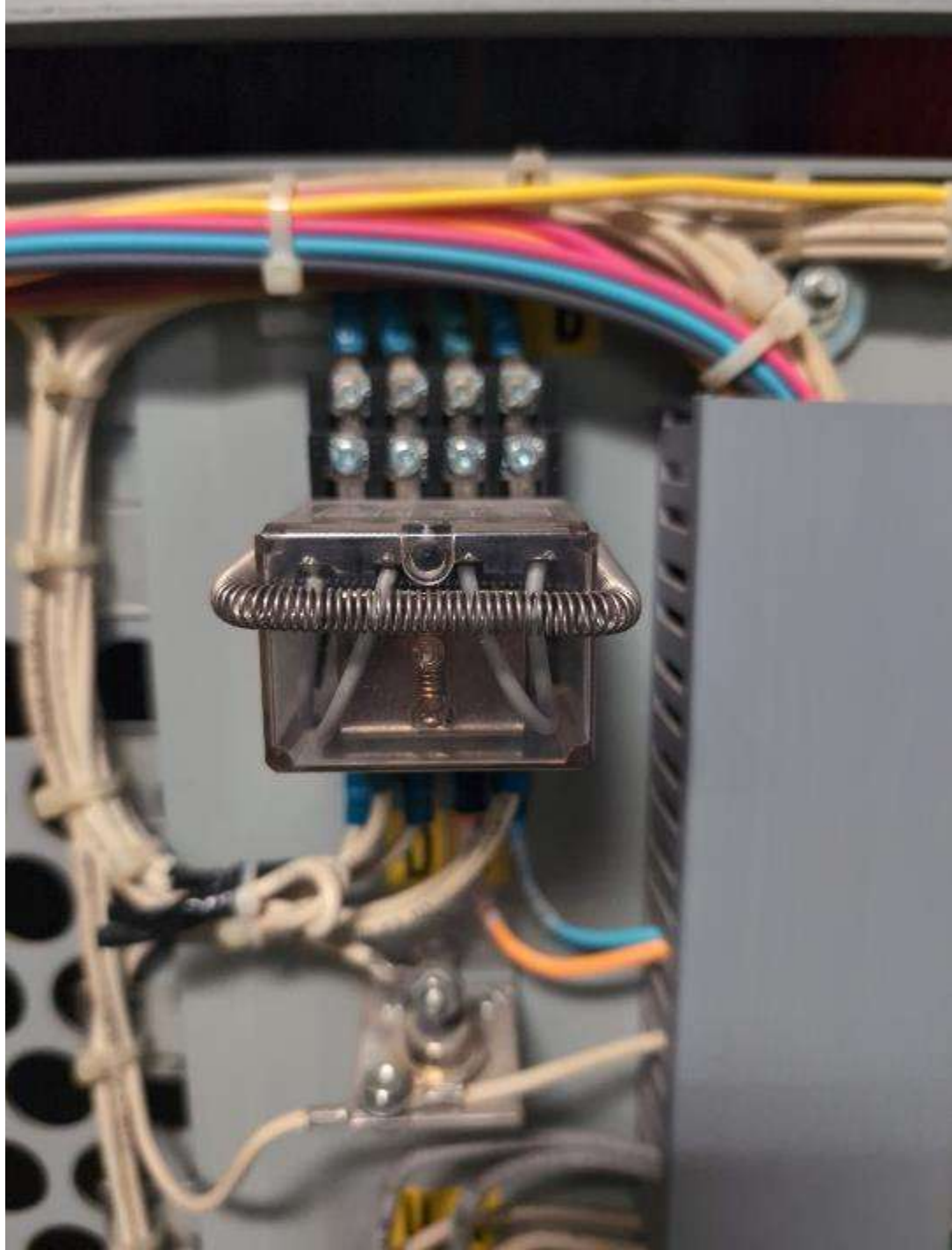




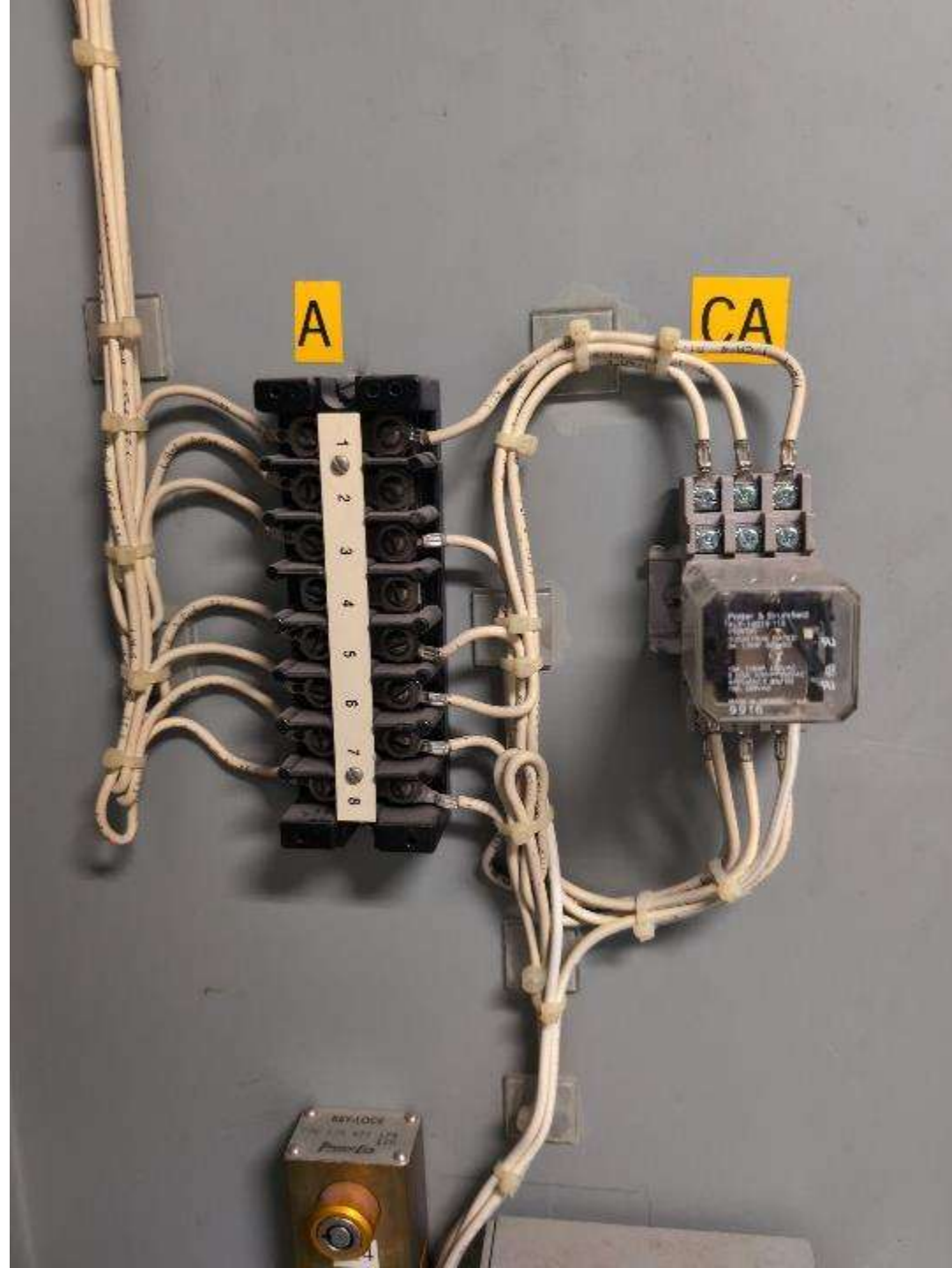








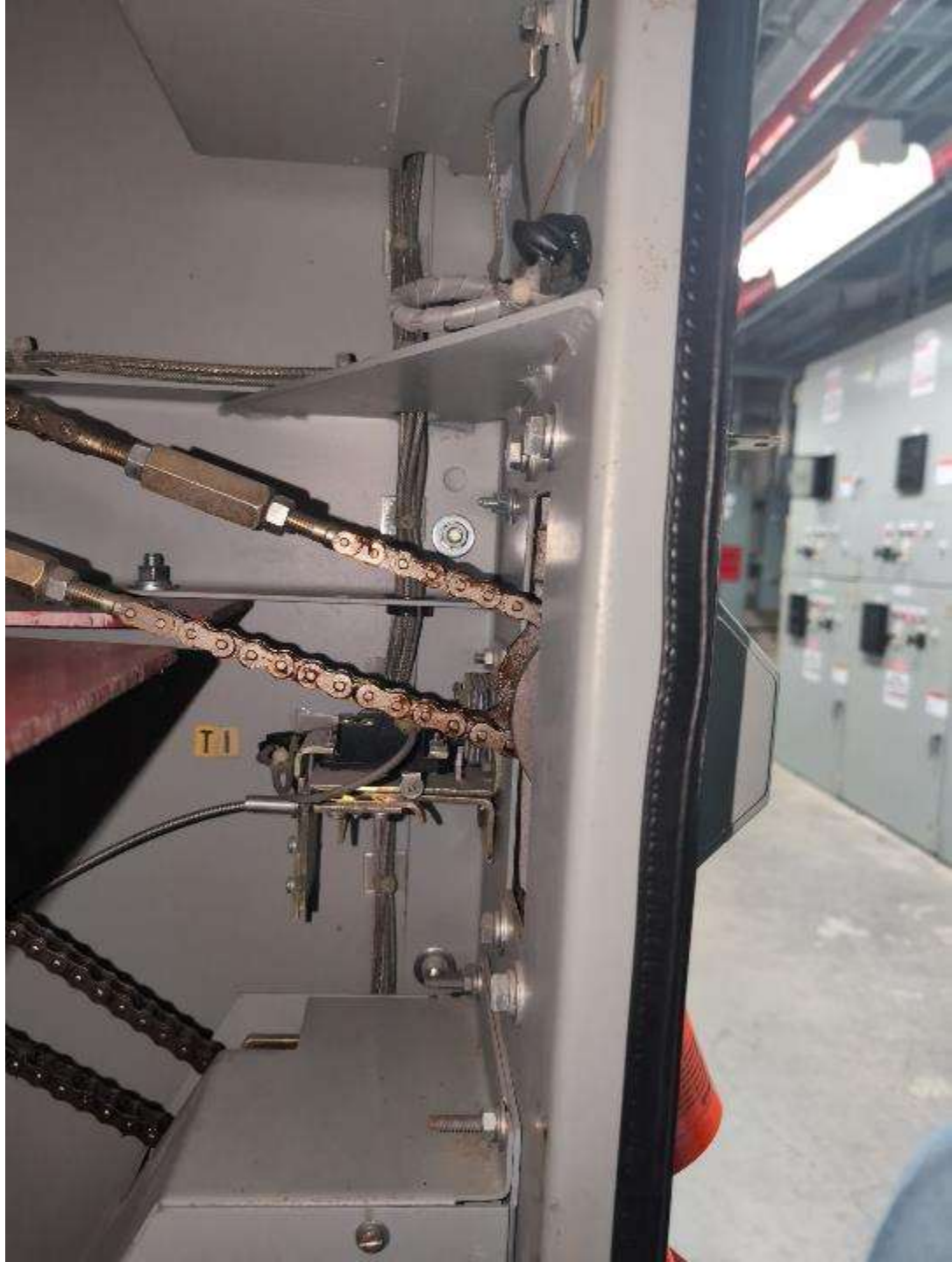














VOLTAGE - KEEP OUT

BEFORE OPENING DOORS OR WORK ON  
EQUIPMENT, UNLESS YOU COMPLY WITH ALL  
OF THE FOLLOWING:  
1. Voltage & power has been turned off.  
2. Work qualified & insulated as possible at this  
point.  
3. OFF POWER - LOCK OUT - TAG - PROPERLY  
ID ALL CIRCUITS BEFORE WORKING ON THIS  
EQUIPMENT. USE PROPER SAFETY PRECAUTIONS.



OPEN  
←

127

127

89  
Spare  
Keys  
#127

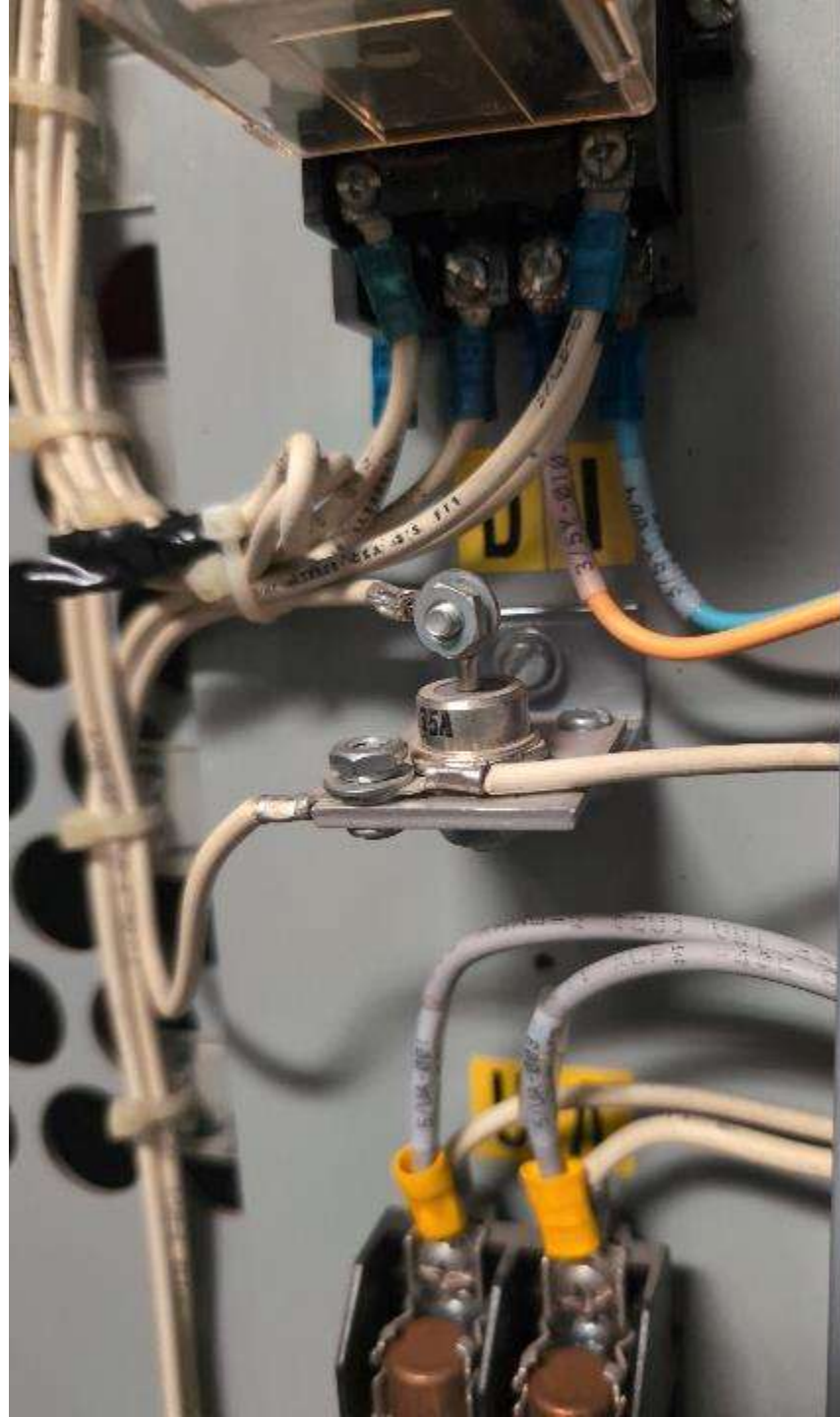




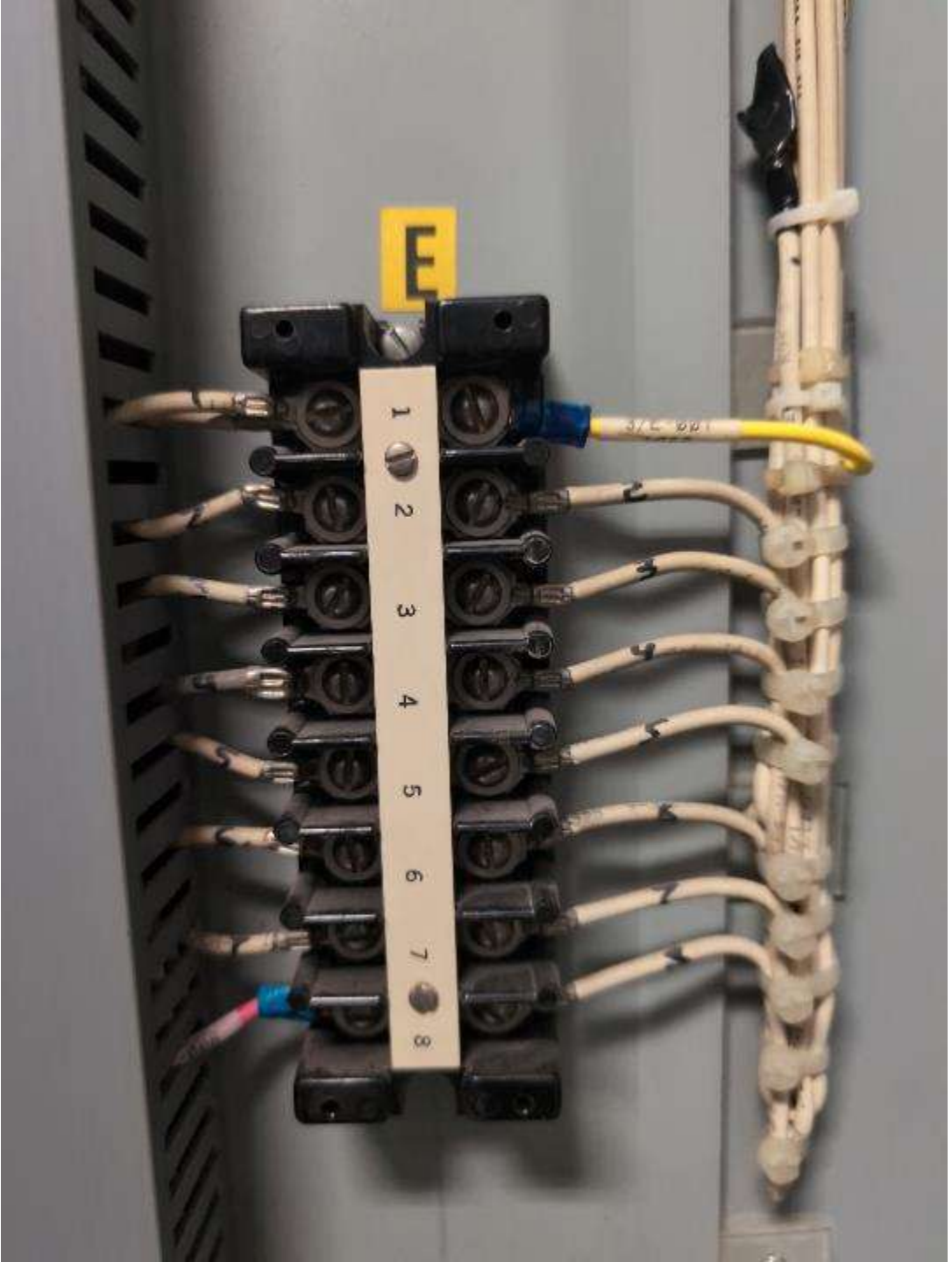






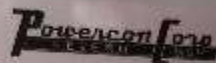












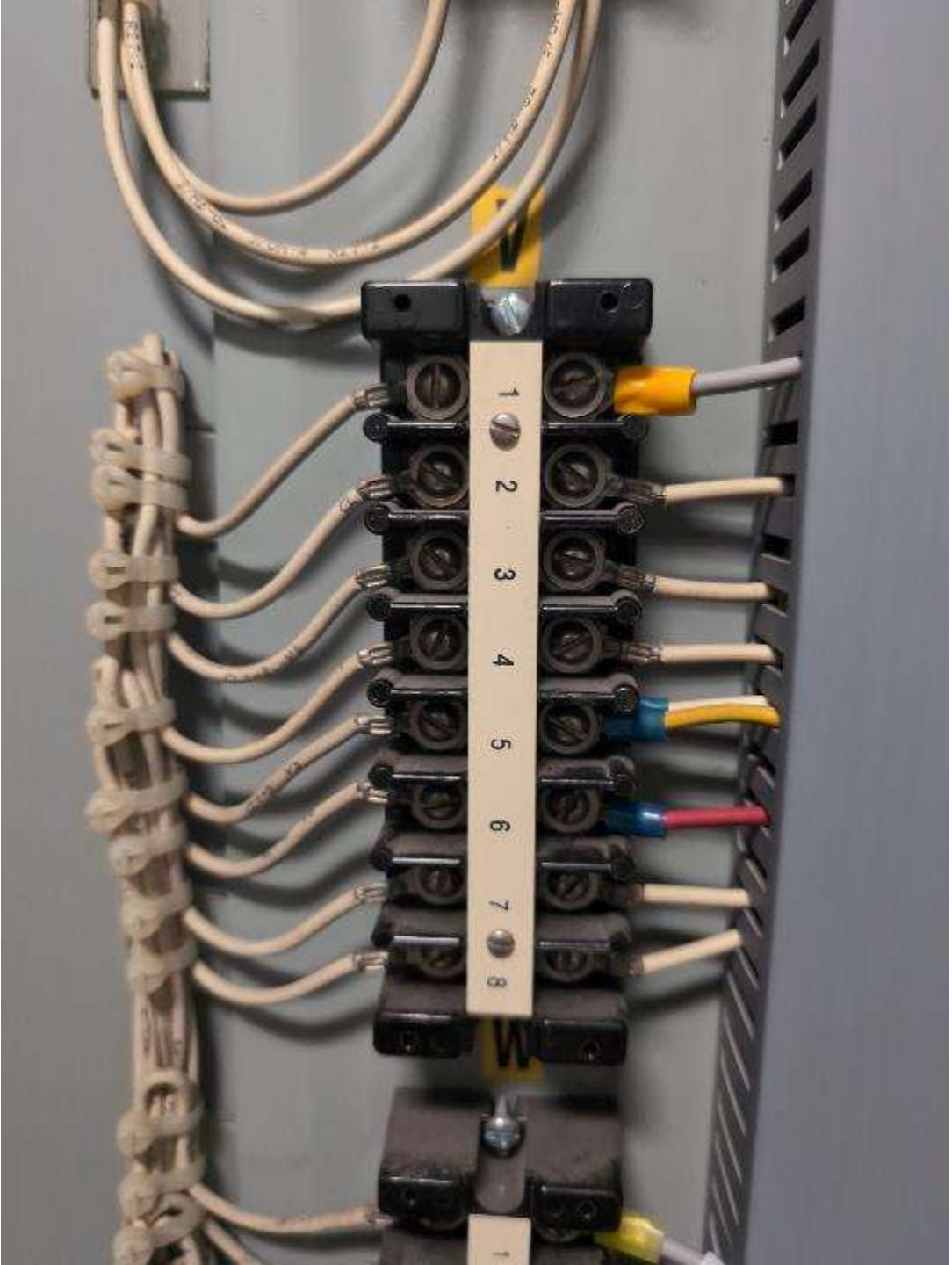
INDOOR NEMA-12 METAL-ENCLOSED SWGR

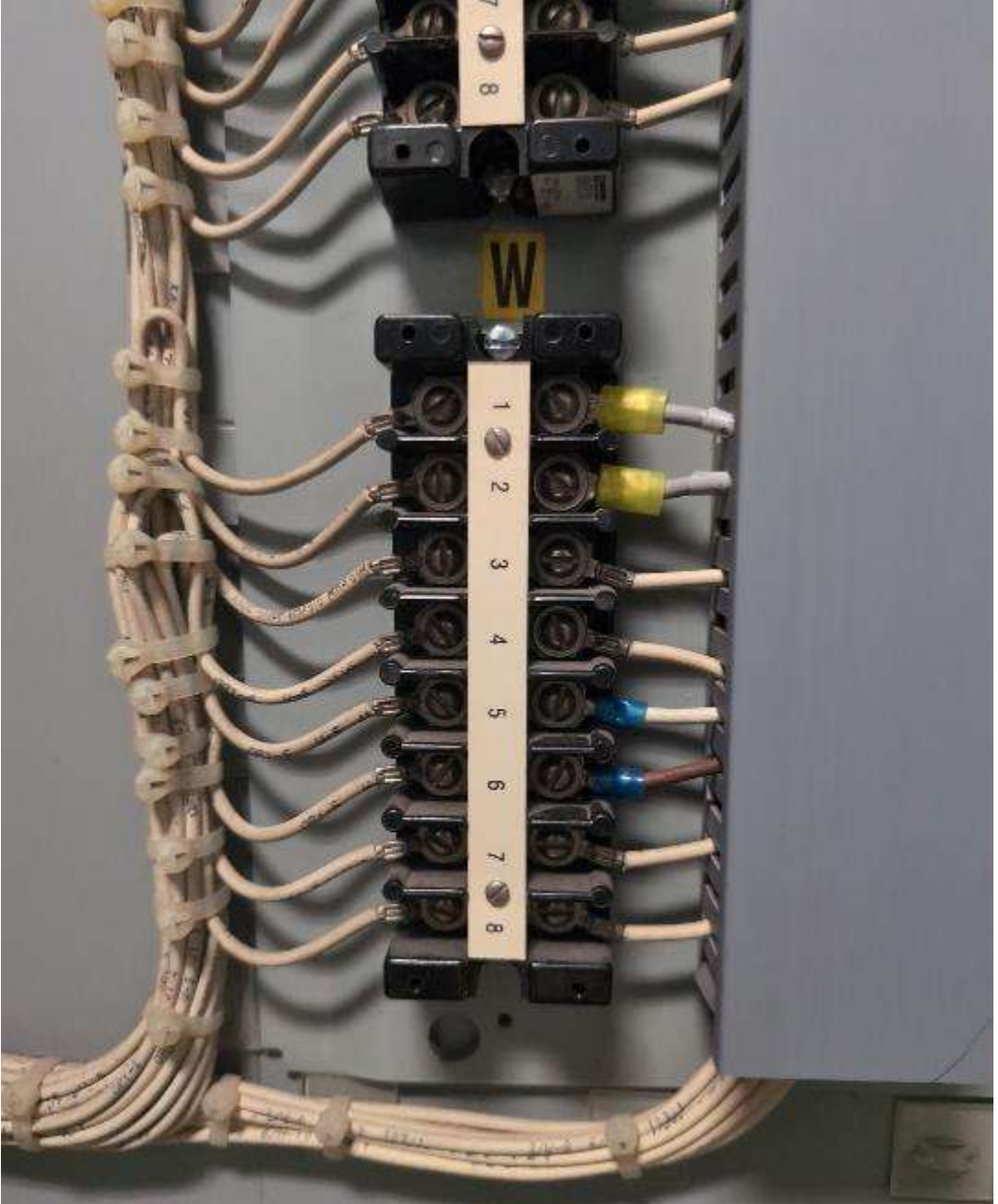
MODEL	S-15523	4-10724	SERIAL	00-27071			
VOLTAGE	8KV	42	60	PH	3	AMPS	1200

--













## Certificate of Warranty

ISSUED TO GENERAL ELECTRIC SUPPLY

ON JUNE, 2000

S.O. 00-27971

### ORIGINAL WARRANTY

The Powercon Corporation warrants to the original Purchaser that the equipment to be delivered hereunder will be free from defects in material, workmanship and title and will be of the kind and quality designated or described in the contract. **The foregoing warranty exclusive and in lieu of all other warranties whether written, oral, or statutory. NO IMPLIED STATUTORY WARRANTY OF MERCHANTABILITY OR FITNESS FOR PARTICULAR PURPOSE SHALL APPLY.** If it appears within one year from the date of shipment by the company that the equipment delivered hereunder does not meet the warranties specified above and the Purchaser notifies the Powercon Corporation promptly, the Powercon Corporation shall thereupon correct any defect, including non-conformance with the specifications, at its option, either by repairing any defective part or parts or by making available at the Powercon Corporation plant, a repaired or replacement part. But if the equipment is installed or its installation supervised by the Powercon Corporation, said one year shall run from the completion of installation, provided same is not unreasonably delayed by the Purchaser, in any case, not to exceed a period of eighteen (18) months. The conditions of any test shall be mutually agreed upon and the Powercon Corporation shall be notified of, and may be represented at all tests that may be made. The liability of the Powercon Corporation to the original Purchaser (except as to title) arising out of the supplying of the said equipment, or its use, whether on warranty, contract or negligence, shall not in any case exceed the cost of correcting defects in the equipment as herein provided and upon the expiration of said one year, all such liability shall terminate. The foregoing shall constitute the sole remedy of the Purchaser and the sole liability of the Powercon Corporation. Seller does not warranty any products or services of others which buyer has designated.



### WARRANTY IMPLEMENTATION AND CONDITIONS

On those occasions where service help is required, the Powercon Corporation should be notified at once through its Service Department. No charges or expenses should be incurred except as authorized by the Corporation in writing. Making unauthorized corrections or doing unauthorized work voids this Warranty and renders reimbursement impossible.

At times, the Powercon Corporation may request labor and/or material services from you. At our option we will provide competent supervision who will authorize such services by signing the Time Sheets of the people involved. No reimbursement can be made without signed Time Sheets.

The services rendered must be of the type and quality satisfactory to the Powercon Corporation, and we reserve the right to reject any and all such services.

The above in no way prejudices the right of the Powercon Corporation to correct, as stipulated in the Warranty, any problems that may occur in equipment manufactured by the Powercon Corporation.

EQUIPMENT SERVICED BY POWERCON CORP.

FOR EQUIPMENT MAINTENANCE  
OR SERVICE CONTACT  
PHONE 410-551-6500

EQUIPMENT SERVICED BY POWERCON CORP.

DATE \_\_\_\_\_ BY \_\_\_\_\_

DATE \_\_\_\_\_ BY \_\_\_\_\_

SERVICE AND PARTS BY:

